

A Different League!

ALISS 2025-26

AL SHIFA INTERNATIONAL STUDENT SEMINAR

16-17 DECEMBER 2025

- Commerce and Management Studies : AI in Business Opportunities
- Computer Science : Cyber Security and Digital Forensics
- English : Reimagining Society and Culture
- Psychology : Cyberpsychology and the Psychological Impact of Digital Life
- Economics : Economics in the Digital Age:
Intersection of Technology, Growth, and Development
- Nutrition and Dietetics : Healing Through Food: Bridging Deficiencies, Lifestyles, and Culture



**AL SHIFA COLLEGE
OF ARTS & SCIENCE**

(Affiliated to University of Calicut & Approved by AICTE, UGC 2(f))

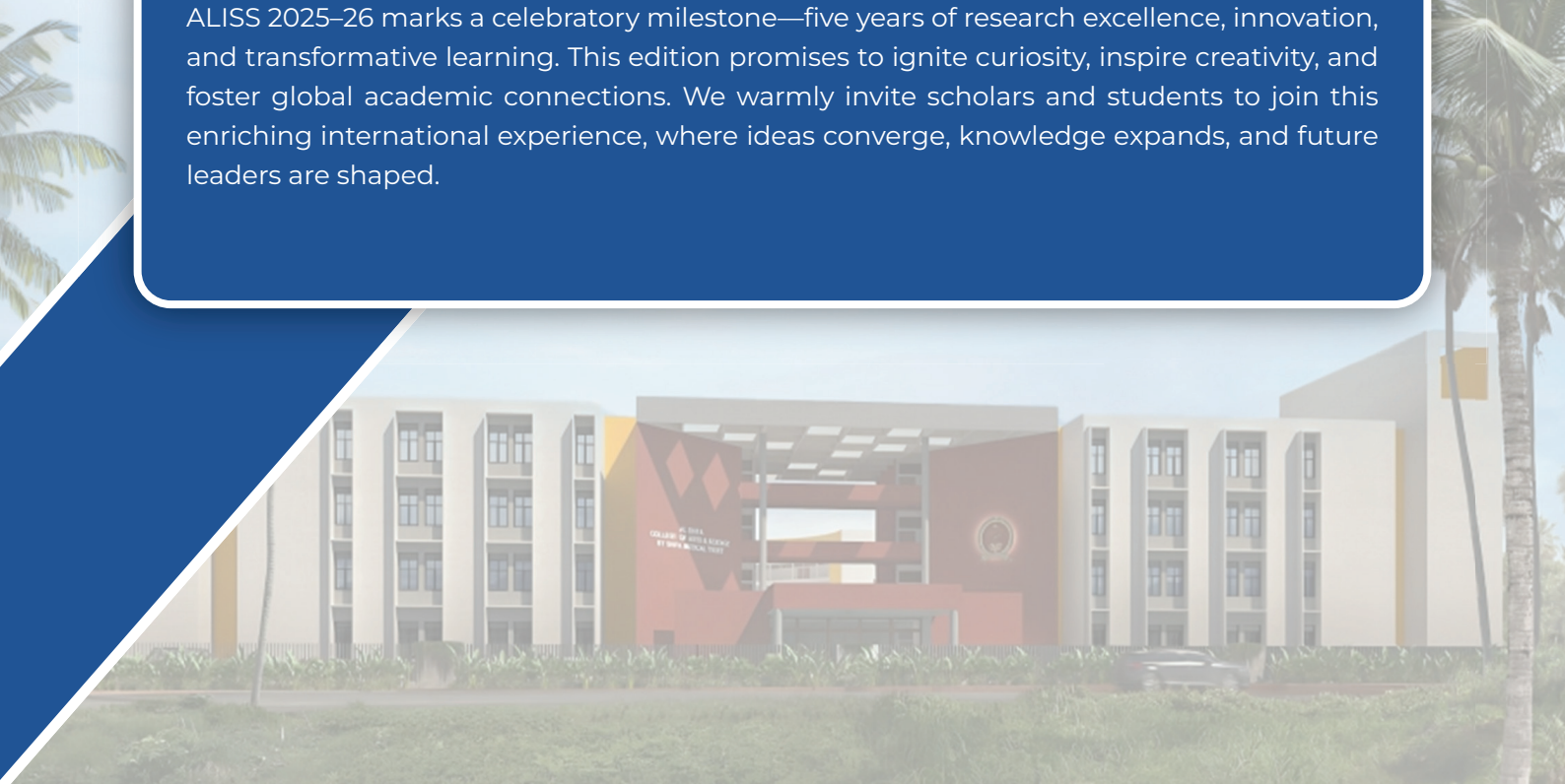


Al Shifa College of Arts and Science is a dynamic and forward-looking Institution of Higher Education, affiliated with the University of Calicut, Kerala. Anchored in the timeless values of excellence, empowerment, and innovation, the College has charted a remarkable journey since its inception in 2020–21. Today, it proudly offers ten undergraduate and two postgraduate programmes, shaping young minds into knowledgeable, socially responsible, and globally aware individuals.

Set amidst a lush 30-acre green campus in Perinthalmanna, Kerala, Al Shifa College aspires to become a centre of national eminence, promoting high-quality teaching-learning practices, fostering a global outlook, and inspiring a strong social mission. The College is nurtured by the Shifa Medicare Trust, which has over two decades of excellence in professional health education, spanning Nursing, Paramedical, and Pharmacy disciplines. Al Shifa International Student Seminar (ALISS) is the flagship, student-powered initiative of the College. Entirely conceived, organized, and executed by the student community, this multi-department seminar brings together scholars, presenters, and experts from across disciplines, creating a vibrant arena for intellectual exchange, creative thinking, and innovation. ALISS provides students with hands-on opportunities to explore academic, cultural, and administrative domains, nurturing collaboration, experimentation, and holistic growth.

Since its launch in 2022, following the resounding success of the National Student Seminar in 2021, ALISS has emerged as a prestigious International Academic platform. Each edition opens doors for students to present research, engage with thought leaders, and connect with peers.

ALISS 2025–26 marks a celebratory milestone—five years of research excellence, innovation, and transformative learning. This edition promises to ignite curiosity, inspire creativity, and foster global academic connections. We warmly invite scholars and students to join this enriching international experience, where ideas converge, knowledge expands, and future leaders are shaped.



Department of Commerce and Management Studies

The Department of Commerce at Al Shifa College of Arts & Science was established in the 2020 academic year with the vision of developing competent, ethical, and industry-ready business professionals. The department offers a diverse range of undergraduate programmes — Bachelor of Business Administration (BBA), Bachelor of Commerce with Computer Applications (BCom CA), and Bachelor of Commerce with Finance (BCom Finance) and Bachelor of commerce with Taxation (BCom Taxation). These programmes are carefully designed to provide students with a strong foundation in business principles, accounting, management, and finance, while also equipping them with practical skills relevant to the modern corporate environment. Through a well-structured and dynamic curriculum, students are introduced to key areas such as financial accounting, business management, marketing, taxation, economics, and e-commerce. The department emphasizes both theoretical understanding and practical exposure, ensuring that students develop analytical skills, managerial competence, and decision-making abilities essential for success in the business world. Beyond academics, the Department of Commerce actively encourages students to participate in seminars, workshops, industry visits, and entrepreneurship development programs. These initiatives offer students hands-on experience and help bridge the gap between classroom learning and real-world business practices. The department also promotes student involvement in various co-curricular and extension activities, nurturing leadership qualities, teamwork, and communication skills. The department maintains strong connections with industry and professional bodies, facilitating internships, training sessions, and placement opportunities in reputed organizations. With its holistic approach to education, the Department of Commerce at Al Shifa College of Arts & Science is dedicated to shaping young minds into capable business leaders, entrepreneurs, and professionals who can contribute effectively to the economic and social progress of the nation.



THEME

AI in Business Opportunities

SUB-THEMES

- Enhancing Productivity Through AI-Powered Automation
- Improving Customer Experience with AI
- Data-Driven Decision-Making Using AI
- AI in Sales and Marketing Optimization
- AI for Cost Reduction and Efficiency Gains
- New Product and Service Innovation Enabled by AI
- AI in Risk Management and Fraud Detection
- Talent Management and AI in HR
- Opportunities in AI-Driven Business Models
- Ethical AI and Trust as a Competitive Advantage



Artificial Intelligence (AI) has emerged as a transformative force in the modern business landscape, creating vast opportunities across industries by enhancing productivity, improving decision-making, and driving innovation. AI-powered automation streamlines repetitive tasks, enabling organizations to achieve greater efficiency and focus on strategic growth, while intelligent systems help deliver personalized customer experiences and build stronger relationships. By turning massive volumes of data into actionable insights, AI supports data-driven decision-making, optimizes sales and marketing strategies, and enables cost reduction through smarter resource management. It also plays a key role in developing innovative products and services, improving risk management, and detecting fraud in real time. Beyond operations, AI is revolutionizing human resource management through talent acquisition, performance analytics, and employee engagement tools. Moreover, the rise of AI-driven business models—such as AI-as-a-Service and predictive analytics platforms—illustrates how deeply AI is reshaping the global economy. However, with these advancements come challenges related to ethics, transparency, and trust. Ensuring the responsible and fair use of AI has become a competitive advantage, as organizations must balance technological progress with ethical practices to build credibility and sustain success in the digital era.

Department of Computer Science

The Department of Computer Science at Al Shifa College of Arts & Science was established in 2023–2024 with the vision of nurturing a generation of skilled, innovative, and industry-ready computer professionals. The department currently offers two undergraduate programmes — Bachelor of Computer Applications (BCA) and Bachelor of Science in Artificial Intelligence (BSc AI). These programmes are designed to provide students with a comprehensive understanding of core computer science principles while equipping them with specialized expertise in emerging domains such as Artificial Intelligence, Cybersecurity, and Big Data Analytics. Through a rigorous and well-structured curriculum, students gain exposure to both theoretical frameworks and practical applications in areas including programming, algorithms, data structures, software engineering, and machine learning. To strengthen community and industry engagement, the department organizes a series of outreach and extension programmes under the banner “Connect”. These initiatives aim to extend the benefits of technology education to schools, communities, and allied institutions, fostering a culture of collaboration, awareness, and social responsibility among students. The department also conducts a vibrant initiative titled “Tech Talk Series”, a platform led by the students themselves, where participants discuss and deliberate on recent technological advancements, innovations, and trends shaping the digital world. This series helps students enhance their communication, presentation, and critical analysis skills, while keeping them updated with cutting-edge developments in the computing field. Furthermore, the department maintains active collaborations with industry partners and academic organizations, providing students with access to internships, workshops, and placement opportunities that strengthen their employability and practical experience. With its blend of academic excellence, experiential learning, and social outreach, the Department of Computer Science at Al Shifa College of Arts & Science continues to inspire and produce competent graduates who are ready to lead and contribute meaningfully to the ever-evolving world of



THEME

CYBER SECURITY & DIGITAL FORENSICS

SUB-THEMES

- Network Security, Intrusion Detection, and Traffic Analysis
- Cloud Security and Virtual Environment Forensics
- Mobile, IoT Security, and Device Forensics
- AI and Machine Learning in Cyber Defense and Forensics
- Malware Analysis, Reverse Engineering, and Threat Intelligence
- Cyber Security in Critical Infrastructure (Healthcare, Finance, etc.)
- Incident Response, Investigation Techniques, and Risk Management
- Blockchain, Cryptocurrency, and Emerging Forensic Challenges

Cyber Security and Digital Forensics have become critical pillars in the digital era, playing a vital role in protecting information, ensuring privacy, and maintaining the integrity of technological systems. As our dependence on digital platforms continues to grow, so does the complexity and scale of cyber threats. This field encompasses a diverse range of subthemes, each addressing a unique aspect of securing digital infrastructures and investigating cyber incidents to build a safer and more resilient digital environment.

From network security and intrusion detection to mobile forensics, cloud protection, and blockchain investigations, the scope of cybersecurity and digital forensics is vast and dynamic. Emerging technologies such as artificial intelligence and machine learning are now being leveraged to predict, detect, and respond to sophisticated cyberattacks in real time. At the same time, forensic techniques enable investigators to trace digital footprints, analyze malware, and gather evidence crucial for legal proceedings. These advancements are reshaping the way we defend critical systems across sectors such as healthcare, finance, and governance. However, with these opportunities come significant challenges. Rapid technological growth introduces new vulnerabilities, legal complexities, and ethical considerations that must be carefully navigated. Issues related to privacy, evidence handling, cyber ethics, and regulatory compliance require constant attention to ensure responsible digital practices. By exploring these subthemes, we can gain a deeper understanding of both the defensive and investigative dimensions of cybersecurity, equipping individuals and institutions to address modern cyber threats effectively while fostering trust in the digital landscape.



Department of English

The Department of English at Al Shifa College of Arts and Science, Perinthalmanna, is committed to fostering a passion for language, literature, and communication through diverse academic and co-curricular initiatives. Offering undergraduate programmes in English Language and Literature, the department places students at the centre of all its endeavours. Notable initiatives include the Invited Student Talk Series (ISTS), launched as part of World Environment Day 2021 in association with the Nature Club, where students from reputed institutions across the country have delivered insightful presentations. The department conducts weekly book review sessions that encourage critical engagement with literary texts and facilitates idea exchange through Reading Club collaborations with Providence College for Women, Coonoor. As part of its outreach programme, students and teachers visit nearby primary schools to make English learning enjoyable and accessible while fostering social responsibility. The Centre for Development of English Language Skills (CDELS) of the Department of English promotes communicative competence through in-house and outreach programmes aimed at enhancing English proficiency among students, young learners, and Anganwadi workers.

The Research Forum, where faculty present papers and share innovative ideas every Friday, nurtures a strong research culture. Faculty members have published books and papers in reputed journals, contributing to literary scholarship and inspiring academic excellence. Students actively participate in peer teaching sessions and in various activities organized by the Active English Club to develop creativity, communication, and confidence. Collaborations with Providence Women's College (Autonomous), Coonoor, and Al Shifa College of Pharmacy, Kizhattur, further enhance language upskilling initiatives. The department has also published works such as Proceedings of the National Seminar for Students on English Fiction since 2000 and The Republic of Hope, a collection of poems by students, along with the ISBN book Marginality and Resistance in Contemporary Culture. Through such sustained efforts, the department continues to strive for the holistic development of its stakeholders. ALISS '25 stands as one of its significant ventures.



THEME

SHAPING SELFHOOD THROUGH CULTURE AND SOCIETY

SUB-THEMES

- Reimagining Identities: Gender, Sexuality, and Literature in the 21st Century
- Trans Narratives and Embodied Experiences:
- Feminist Poetics and Performance:
- Masculinities in Crisis and Transformation:
- Literature and Postcolonialism: Voices from the Margins
- Decolonizing the Curriculum: Re-reading and Re-framing Canonical Texts:
- The Politics of Language in Postcolonial Writing:
- Postcolonial Diasporas and the Concept of Home:

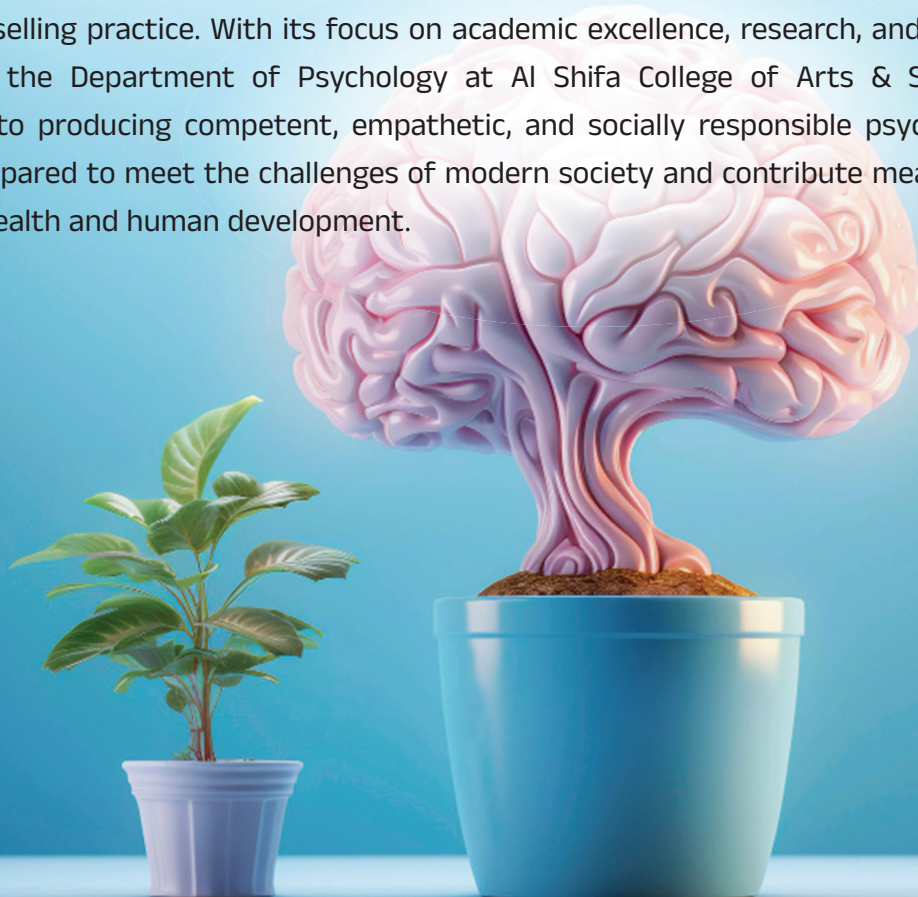
In today's rapidly changing world, the intersections of identity, culture, and society have grown increasingly complex and multifaceted. Once confined to fixed categories such as nationality, class, gender, or religion, identity now exists within fluid and shifting boundaries shaped by globalization, migration, digital culture, and evolving social consciousness. Literature, as both a mirror and critic of society, plays a vital role in reflecting and reshaping these transformations. Contemporary narratives challenge established norms and create space for marginalized voices to reimagine their place in the cultural landscape. Discussions surrounding gender, sexuality, and embodiment—through themes such as Queer Futures and Speculative Fiction, Trans Narratives and Embodied Experiences, and Feminist Poetics and Performance—highlight the ways individuals resist traditional binaries and articulate new forms of self-expression. Similarly, explorations of Masculinities in Crisis and Transformation question dominant cultural scripts and open dialogue on vulnerability and redefinition. Postcolonial perspectives enrich this discourse by revisiting Voices from the Margins, urging a Decolonization of the Curriculum, and interrogating the Politics of Language in literary production. Engagements with Postcolonial Diasporas and the Concept of Home reveal deep emotional and historical ties between identity and belonging, while inquiries into Memory, Trauma, and Narrative, including the Trauma of Partition and its Afterlives, underscore literature's capacity to preserve and reinterpret collective experience. Bringing these discussions together under the theme "Identity, Culture, and Society" invites participants to reflect critically on how literature not only represents but also actively constructs identity in a world where cultural boundaries are continuously redefined.



Department of Psychology

The Department of Psychology at Al Shifa College of Arts & Science is dedicated to fostering a deep understanding of human behaviour, mental processes, and well-being. Established with a vision to develop skilled, compassionate, and research-oriented psychologists, the department currently offers the Bachelor of Science in Psychology (B.Sc. Psychology), Master of Science in Clinical Psychology (M.Sc. Clinical Psychology), and Master of Science in Applied Psychology (M.Sc. Applied Psychology). These programs are designed to equip students with both foundational knowledge and specialized expertise in areas such as mental health, counselling, psychological assessment, and applied research.

Through a structured and rigorous curriculum, students gain comprehensive exposure to both the theoretical and practical aspects of psychology, including cognitive processes, behavioural analysis, developmental psychology, psychotherapy techniques, and psychological testing. The department emphasizes mentorship and academic guidance, nurturing critical thinking, analytical skills, and ethical sensitivity in students. Beyond academics, the department actively promotes participation in workshops, seminars, research projects, and community outreach programs. These initiatives allow students to apply psychological principles in real-world settings, collaborate with peers and professionals, and gain hands-on experience in clinical and applied environments. To further enrich the student experience, the department runs three active student initiatives — the Psychometric Club, which enhances skills in psychological testing and data interpretation; the Mindlance Club, which fosters intellectual curiosity and creative engagement with diverse psychological topics; and the Counselling Cell, which promotes emotional well-being through awareness programs, peer-support activities, and guided counselling practice. With its focus on academic excellence, research, and practical application, the Department of Psychology at Al Shifa College of Arts & Science is committed to producing competent, empathetic, and socially responsible psychologists who are prepared to meet the challenges of modern society and contribute meaningfully to mental health and human development.



THEME

CYBERPSYCHOLOGY AND THE PSYCHOLOGICAL IMPACT OF DIGITAL LIFE

SUB-THEMES

- Digital Dependency in Childhood
- Psychological Risks of Screen Addiction among Youth
- Digital Narcissism and Self-Presentation
- Online Identity Formation and Anxiety
- Deepfakes and Identity Manipulation
- Cyber Bullying in Youth
- Cybercrime, Trauma, and Online Victimization
- Digital Intimacy and Relationship Dynamics
- Information Overload and Cognitive Fatigue

In today's digitally connected world, technology profoundly shapes the way individuals think, behave, and interact. From childhood to adulthood, our reliance on screens, social media, and online platforms has created new avenues for learning, communication, and entertainment. However, this digital dependency also brings unique psychological challenges, including screen addiction, anxiety related to online identity, and the pressures of maintaining curated self-presentations in virtual spaces.

The rapid evolution of digital technologies has introduced complex issues such as cyberbullying, identity manipulation through deepfakes, and exposure to online trauma. Youth and adults alike face increased risks to mental well-being, cognitive functioning, and social relationships. At the same time, phenomena like AI companionship and immersive online interactions are reshaping human connections, challenging traditional boundaries between the physical and virtual worlds.

This seminar explores these pressing concerns through research-based insights, practical discussions, and interactive sessions. Participants will gain an understanding of how digital life affects cognition, behaviour, and emotional health, and will learn strategies for fostering resilience, healthy online habits, and safe engagement in the digital realm. By addressing the psychological impact of the digital era, this event aims to equip attendees with knowledge and tools to navigate the modern technological landscape mindfully.



The background of the page is a dark blue gradient. It features a stylized globe on the right side, showing the Americas. Overlaid on the globe and the rest of the page are financial charts: a line graph with a jagged peak and a candlestick chart with blue and white bars. A bright light source is positioned behind the globe, creating a lens flare effect.

Department of Economics

The Department of Economics at Al Shifa College of Arts & Science, established in 2020, has emerged as a center of academic excellence, innovation and critical inquiry into economic issues at local, national and global levels. The department provides a stimulating learning environment that helps students build strong analytical, quantitative and research skills while fostering and in-depth understanding of economic theories and their real-world applications. Within a short span, the Department of Economics has achieved significant growth by introducing innovative teaching methods, research oriented learning and value-added programs. The curriculum emphasizes areas such as microeconomics, macroeconomics, development economics, international trade and public finance, preparing students to critically analyze contemporary economic challenges. A distinctive feature of the program is the emphasize on emerging issues in the Indian and global economy, attend expert lectures and engage in economic surveys and field studies that enhance their skills and employability. The department nurtures intellectual curiosity, critical thinking and social responsibility, equipping students with the knowledge and confidence required to excel in higher studies, research, policy making, banking, corporate sectors and public administration. The Department of Economics at Al Shifa College continues to be a vibrant academic community committed to be creating future-ready graduates who can contribute meaning fully to society and the economy.

THEME

Economy in the Digital Age: Intersection of Technology, Growth and Development

SUB-THEMES

- Digital Transformation and Economic Growth
- E-commerce and the Changing Business Landscape
- The Future of work and Employment in the Digital Economy
- Digital Divide and Inclusive Development
- Data Economy and Cybersecurity
- Digital Governance and Policy Frameworks
- Financial Technology (Fintech) and Economic Inclusion
- Globalization and the Digital Economy
- Sustainable Development in the Digital Era
- Education Innovation and Human Capital in the Digital Economy



The digital age has revolutionized the global economy by reshaping industries, trade and everyday life. Technology-driven innovations have created opportunities for economic growth, enhanced productivity and improved living standards. However, it also presents challenges such as digital inequality, job displacement and cybersecurity risks. In today's interconnected world, economic development is deeply tied to technological progress. Governments, Businesses and Individuals must adapt to the rapid pace of digitalization to remain competitive. It has also led to: Accelerated globalization and economic integration, New business models and industries, Improved efficiency and transparency in governance, increased access to education and finance through digital tools and a heightened need for digital skills and cyber protection. The digital age is transforming economies by merging technology with growth and human development. Its impact is visible in every day sphere from business and governance to education and social inclusion. Embracing digital transformation responsibly ensures sustainable, inclusive and innovation – driven growth for the future.

Department of Nutrition and Dietetics

The Department of Nutrition and Dietetics at Al Shifa College of Arts & Science was established in 2024 with the vision of fostering a generation of knowledgeable, compassionate, and research-driven nutrition professionals. The department currently offers undergraduate programs designed to build a strong foundation in nutrition science, food technology, and public health, while integrating modern advancements in clinical nutrition, nutrigenomics, and food innovation. Through a well-structured curriculum, students gain exposure to core areas such as human physiology, diet therapy, food microbiology, nutritional biochemistry, and community nutrition. The program emphasizes the integration of scientific theory with practical experience, ensuring that students are equipped to apply nutrition principles in clinical, community, and industrial settings. In addition to classroom learning, the department promotes a culture of active participation in research projects, outreach initiatives, and professional development programs. A hallmark of the department is its Reading Forum, a unique practice designed to keep students informed about the latest advancements in nutrition science while cultivating habits of critical thinking, discussion, and lifelong learning. Student-led activities such as the Nutrition Clinic and the Nutri-Nourish Club provide valuable opportunities for applying classroom knowledge in real-life contexts, while flagship events like Nutrition Week and Breastfeeding Week foster awareness on public health and sustainable eating practices. The department also maintains strong community engagement, partnering with organizations such as the National Service Scheme (NSS), Women Development Cell (WDC), and Kudumbashree units to promote nutrition education and food security. Through these collaborations, students and faculty alike contribute meaningfully to improving community well-being and advancing public health literacy. With its balanced focus on academic excellence, practical exposure, and social responsibility, the Department of Nutrition and Dietetics at Al Shifa College of Arts & Science is committed to shaping future-ready nutritionists who can address global challenges in health, diet, and sustainability.



THEME

Healing Through Food: Bridging Deficiencies, Lifestyles and Culture

SUB-THEMES

- Functional Foods and Nutraceuticals in Disease Prevention
- Cultural Diets and Traditional Healing Practices
- Bridging Nutrient Deficiencies Through Sustainable Diets
- Food as Medicine: Integrating Nutrition into Healthcare
- Gut Health and the Microbiome Revolution
- Lifestyle Nutrition for Chronic Disease Management
- Global Food Cultures and the Science of Healing Diets
- Plant-Based Nutrition and Sustainable Eating Habits
- Innovations in Food Technology and Personalized Nutrition

Nutrition Science and Technology have entered a transformative era, fundamentally reshaping the ways in which we comprehend, produce, and consume food to promote enhanced health outcomes and sustainable development. As global health priorities shift, the field extends beyond the scope of traditional dietetics to incorporate molecular nutrition, advanced food innovation, digital integration, and environmental responsibility. Healing Through Food: Bridging Deficiencies, Lifestyles, and Culture, exemplifies these dynamic intersections of science, technology, and holistic health that are redefining contemporary nutrition practices and policy frameworks.

Central to this theme is the recognition that food serves as a pivotal medium for healing, cultural continuity, and the remediation of both nutritional and lifestyle-related disparities. The associated subthemes such as Functional Foods and Nutraceuticals in Disease Prevention, Food as Medicine: Integrating Nutrition into Healthcare, and Gut Health and the Microbiome Revolution underscores the emergence of evidence-based, integrative dietary approaches and the expanding role of microbiota in disease prevention and health optimization. Concurrently, subthemes like Cultural Diets and Traditional Healing Practices, Global Food Cultures and the Science of Healing Diets, and Plant-Based Nutrition and Sustainable Eating Habits illuminate the enduring significance of traditional dietary wisdom, cultural diversity, and sustainable dietary models in shaping resilient food systems.

Moreover, the paradigm is further advanced by technological and communicative innovation. Subthemes including Innovations in Food Technology and Personalized Nutrition and Nutrition Communication and Behavioral Change reflect the evolving landscape wherein scientific advancement enables the customization of nutritional strategies and facilitates widespread dissemination of health-promoting practices. Together, these dimensions foster an interdisciplinary platform dedicated to leveraging the full potential of food as a cornerstone of individual well-being, public health, and planetary sustainability.

Paper Submission Guidelines

- The abstract must not exceed 250 words including title page, discipline, sub theme of the paper, name of the author and complete address of the author including phone/Mobile Number and email address.
- The paper should be in Times New Roman, font size 12" with 1.5 line spacing, with a margin of 1 inch on all sides.
- The paper can be on any of the sub-themes and limited to a minimum of 2000 words and a maximum of about 4000 words.
- The paper should be the author's original work and should not have been published earlier in any other seminar / journal.
- Papers may be presented individually or as a team. In the case of team presentations, at least one presenter should be registered, and the co-presenter's name must be mentioned in the Google form.
- All Authors/ Co-authors of papers selected for presentation will be given a certificate.
- The presentation should be done using PowerPoint slides (PPT). LCD projector will be provided.

Deadline for submission of abstracts : **25 November 2025**

Deadline for submission of articles : **08 December 2025**

Mail your abstract to : aliss@alshifacollegeofartsandscience.ac.in

Last date for online Registration is 8 December 2025

Registration Link:

<https://forms.gle/qizNtg8dqfdTDGmz7>



Scan QR Code for Registration



Fee for paper presentation : Rs. 400/-

A/C No : 8682101209557
A/C Name : ACAS Academia
Bank Name : Canara Bank
Branch Name : Perinthalmanna, Al Shifa Hospital Branch
IFSC : CNRB0008682

Participants are requested to upload the payment screenshot in the Google form for completing registration.

Student Co-ordinators

Department of Computer Science

Karthika V. S.
Second Year BCA
+91 8075434425

Asim Ali
Second Year BSc AI
+91 94005 55150

Department of Psychology

Rinsha K. P.
First Year, M.Sc. Applied Psychology
+91 90372 17958

Rinshida M. P.
Second Year, B.Sc. Psychology
+91 97449 19205

Department of English

Mufeeda P.
Second Year B.A English
+91 73568 90910

Mohammed Shadeed V. P.
Second Year B.A English
+91 7034943862

Department of Nutrition and Dietetics

Binziya N.
Second year BSc Nutrition and Dietetics
+91 7594815089

Jyothika
First year BSc Nutrition and Dietetics
+91 70125 29591

Department of Economics

Shihana Fathima V.
Second year B.A Economics
+91 90377 89468

Fathima Rinsha M.
Second year B.A Economics
+91 75590 34501

Department of Commerce and Management Studies

Nimisha K.
Second Year B. Com Taxation
+91 9048348576

Musbin T.
BBA second year
+91 62385 05278

Department-wise Faculty Advisors

Department of Computer Science

Ragi K Haridas
9947840964

Department of Psychology

Aushique Ali
8086718350

Department of Nutrition and Dietetics

Nada Musthafa
7594062124

Department of English

Sulfath. P. K
8086798800

Department of Economics

Adila sherin. A
9747396599

Department of Commerce and Management Studies

Shamna. K
7902949038

College Student Conveners

Mubarak Ahammed
Second Year BCom Finance
+91 8590972465

Fathima Sherin M. P.
Second Year B.A English
+91 73568 90910

Faculty Advisors

Jushaini P.
Assistant Professor

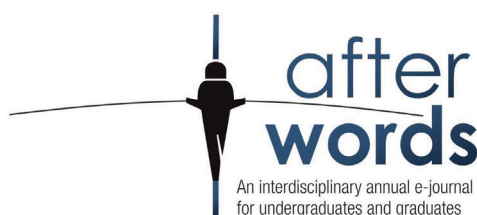
Muhammed Aarsal T. K.
Assistant Professor

Seminar Chair

Dr. Kamaludheen K. T.
Principal

Chief Patron

Dr.P. Unneen
Managing Trustee
Shifa Medicare Trust



An opportunity is provided to the interested paper presenters to publish their articles on the fourth volume of 'afterwords: An interdisciplinary annual e-journal for graduates and undergraduates (Online ISSN: 2583-9047). The journal has produced two volumes of research articles by students and the next volume will be released in June 2026.

A Different League!



AL SHIFA COLLEGE OF ARTS & SCIENCE

(Affiliated to University of Calicut & Approved by AICTE, UGC 2(f))