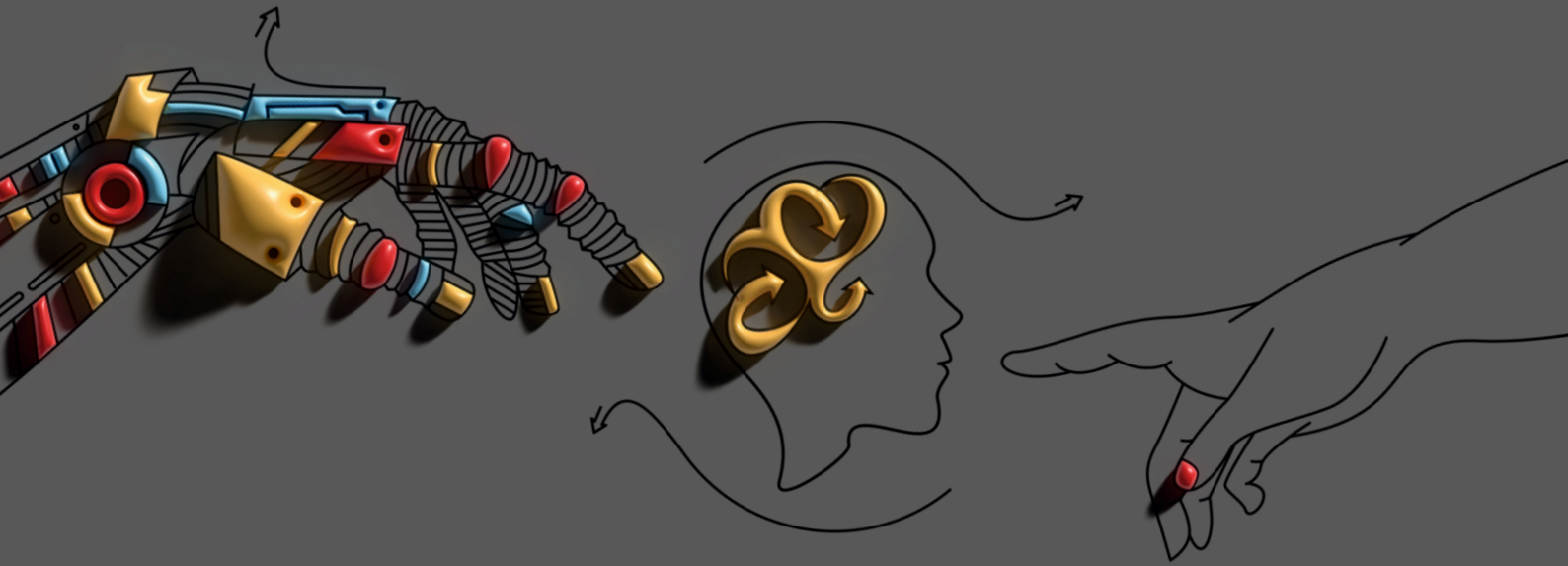


A Different League!

AHELS

AL SHIFA HIGHER EDUCATION LEADERSHIP SUMMIT



HIGHER EDUCATION
LEADERSHIP:
**Emerging
Paradigms**
12-13 JUNE 2023



**AL SHIFA COLLEGE OF
ARTS & SCIENCE**
AFFILIATED TO UNIVERSITY OF CALICUT
PERINTHALMANNA - KERALA

in collaboration with
Kerala Higher Education Council

Shifa Medicare Trust

SHIFA MEDICARE TRUST (SMT) was founded in the year 2000 with the prime mission to uplift the educational backwardness of Malabar region aiming to provide effective education to the students for innovative approaches using the highest standards of quality, innovation and visibility. The Trust has drawn its experience in running various colleges over a period of 20 years with vast knowledge in the field.

The steadfast pursuit of a vision, the expertise and experience of the high-profile faculty the SMT has handpicked and groomed, and the keen eye for emphasis on quality - these have helped Shifa Medicare trust to grow in to an Academy of repute within a short span of time. The thousands we have educated and trained and the thousands on our rolls today, are carriers of the much-valued Al Shifa signature. The Trust is proud of the fact that it has molded and delivered to the World true professionals who are marked for their respect for standards and human integrity.



Al Shifa College of Arts & Science

Al Shifa College of Arts & Science is a new institution that was established in 2020. Affiliated to the University of Calicut, Kerala, India, the College currently offers Undergraduate programmes. Located on a 30-acre sprawling, green campus at Perinthalmanna, in the Malappuram district of Kerala, the college aspires to grow into an institution of national eminence, with quality teaching-learning practices, global perspective and a social mission to empower the young as capable human beings.

AHEL S

Al Shifa Higher Education Leadership Summit

AHEL S, Al Shifa Higher Education Leadership Summit, will enable pro-active conversations on issues, policies, crises, challenges and opportunities with emphasis placed on the Leadership perspectives. This obviously means the perspectives in place and the perspectives to emerge if agenda of higher education can be lead for changes. The Summit will annually focus and talk Leadership which also includes leadership at multiple levels: faculty, department chairs, Institution heads, policy makers, university leadership, State level decision makers and the apex leaders nation and world-wide. The first edition of AHELS, Al Shifa Higher Education Leadership Summit will be held on 12 and 13 of June 2023 at Al Shifa Campus 2, Keezhattur, Ootty road, Perinthalmanna, Kerala.

AHELS

AL SHIFA HIGHER EDUCATION
LEADERSHIP SUMMIT

12-13 June 2023

Higher Education Leadership:
Emerging Paradigms

Higher Education Leadership: Emerging Paradigms

The opening edition of Al Shifa Higher Education Leadership Summit (AHELS) will be debating the theme, 'Higher Education Leadership: Emerging Paradigms'. Leadership, irrespective of the domain it operates in, is a concept which changes itself as it changes the premises it leads, a tool of transformation which transforms the domain as it gets transformed. Educational Leadership is a cardinal cultural implement which needs sharpening and shaping as the world around changes its texture and tenor. Higher Education today works under pressures of varying hues and makes and the field calls for leaders who are capable of being in the zone, navigating the bric-a-brac of political, academic, financial and cultural flotsam. Since Higher Education Leadership is tested like never before, it is important to develop strategies to meet those tests and move ahead.

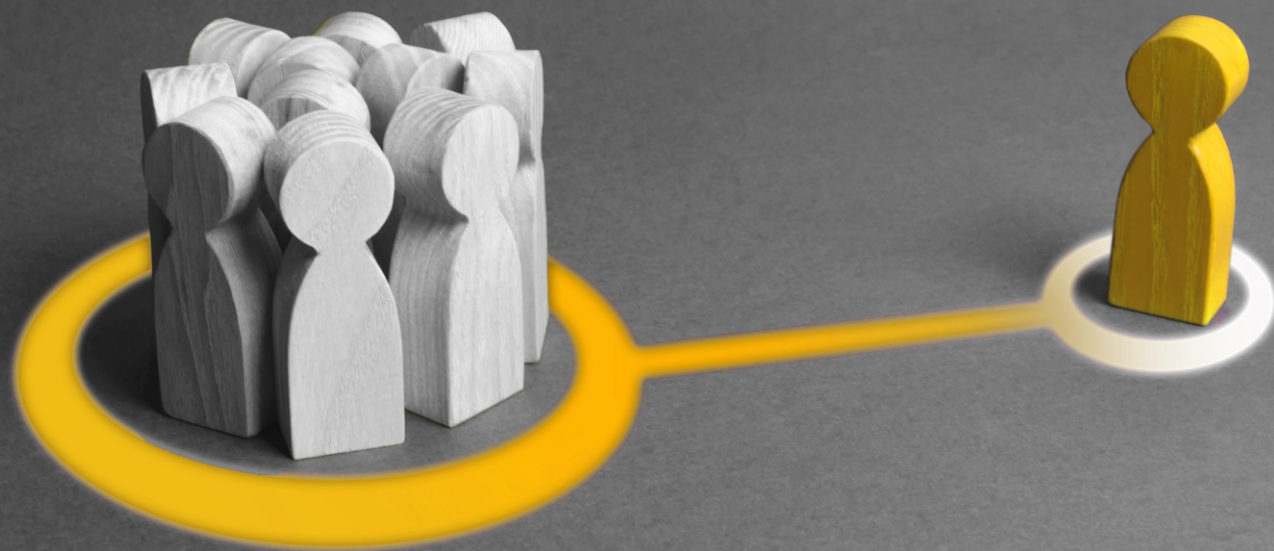
As the challenges which the Higher Education confronts continue to grow in scale and complexity, the world requires institutions with effective and confident leadership that is pro-future, agile and innovative. Higher Education Leaders must be capable of thinking and acting differently, with a web of skill sets and insights to back them up. Resilient and reflective leadership, capable of bringing about large-scale changes are the need of the hour. But how do we change the HE Leadership narrative? What are the new narrative tangents called for? How do we bring about such a transformation in HE Leadership? AHELS looks forward to an exciting exchange of perspectives and plans, priorities and potentialities on these and related questions.

With challenges not always of the digital breed, the tools are to be remade and the processes re-found. For the new millennial and post-pandemic socio-academic transformations, weighing in the experience of the two opening decades of the millennia and the shifting needs of the employment sector, AHELS will open a space for the Higher Education thought leaders and practitioners to huddle.

AHELS invites presentations, research papers and posters on areas listed below for the first edition of the summit scheduled on 12-13 June 2023.

Focus Areas:

- 1 Impact of Technology on HE Leadership
- 2 Impact of Changing Student Population
- 3 College Leadership Challenges
- 4 Leadership Design & Teacher Education Programmes
- 5 Research on Emerging HE Leadership
- 6 Quality Assurance & HE Leadership
- 7 Gender & HE Leadership
- 8 HE Policies in India and Leadership Challenges
- 9 New Education Policy (India) and HE Leadership Opportunities



Paper Presentation **Session**

One session in the AHELS is meant for presentations of quality perspectives on the areas listed above. Original, unpublished papers which offer studied insights are invited from the public and the academia.

SUBMISSION DEADLINES:

Abstract of the paper: 30 April 2023

Full text of the paper: 30 May 2023

PANEL DISCUSSION TOPICS:

Impact of Technology on HE Leadership

Contemporary College Leadership Challenges

Quality Assurance & HE Leadership

New Education Policy (India) and HE Leadership Opportunities



Chief Coordinator

SARITHA. K
Head, Dept. of English
Contact 9388328232

Coordinators

ROHITH. R
Head, Dept. of Commerce

MUHAMMED NOUFAL. M
Head, Dept. of Economics

ABDUL JALEEL. C
Head, Dept. of Psychology

RENJITHA. K. R
Asst. Professor of English

IRSHAD. K
Asst. Professor of Arabic

FEBEENA. K
Asst. Professor of Malayalam

Patrons

K. T. ABDUL RASSAQUE
Secretary, Shifa Medicare Trust

P. HAMZA
Chief Executive, Shifa Medicare Trust

P. K. MOHAMMED HAJI
Treasurer, Shifa Medicare Trust

Dr. AHAMED AMEEN
Trustee, Shifa Medicare Trust

SHEREEFABI. V. P
Trustee, Shifa Medicare Trust

Conference Chair

BABU. P. K. Ph D
Principal

Chief Patron

Dr. UNNEEN. P
Managing Trustee



Global Higher Education

Higher Education systems across the world have undergone core changes in the last two decades. The transformations which have come across higher education in the 21 century were fueled by the new economic contours shaped by the Globalization and increasing recognition of the need for skilled and knowledgeable workforce for the knowledge societies. This has led to massification of higher education, pushing up enrolment to unprecedented levels. Consequently, student mobility, access to research and internationalization of higher education too have been impacted.

The Higher Education Institutions (HEIs) have been experiencing increasing pressures with apex bodies, policy watchdogs and accreditation enforcers breathing down their necks with worrying emphasis on quality and value additions. There has been consistent investigation into the market value of higher education in terms of the skills it delivers and employability it guarantees. The dialogues and researches centering the worth and value of higher education and research have intensified too. To add to this flux, the digital influx and riding on the pandemic waves, flattened the world of learning on the one side, while accelerating polarization of the digital/ economic haves and not-haves on the other.

Digitalization has brought in a major paradigm switch to higher education: content providers moving in from diverse subject and professional backgrounds and private capital flowing at scary proportion into the field. The rise in significance of micro-credentials, the potential possibilities of online and blended learning, option for dual regular degrees, the political pressure on the HEIs to conform to populist proclivities, the confusion in many HEI systems having to conform simultaneously to the retro-political, cultural practices and the pro-scientific outlooks: all these exert pressures on higher education to reformulations and resets. This is not to ignore the fact that the higher education has been plagued by disparities of other kinds too.

HIGHER EDUCATION
LEADERSHIP:
**Emerging
Paradigms**
12-13 JUNE 2023

in collaboration with
Kerala Higher Education Council



**AL SHIFA COLLEGE OF
ARTS & SCIENCE**

AFFILIATED TO UNIVERSITY OF CALICUT
PERINTHALMANNA - KERALA

www.ahels.in